






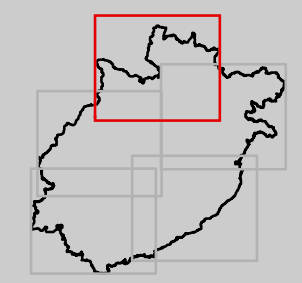
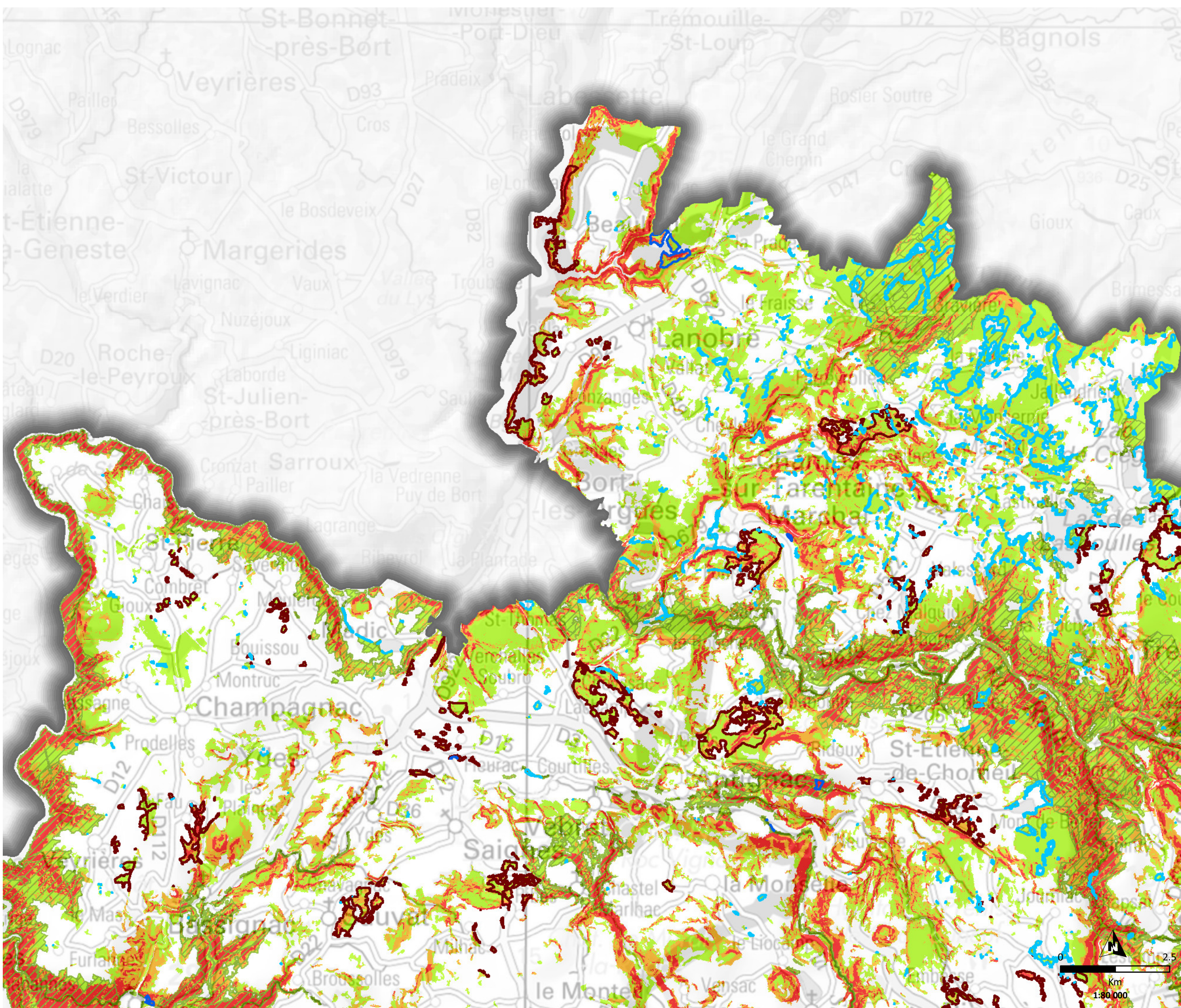









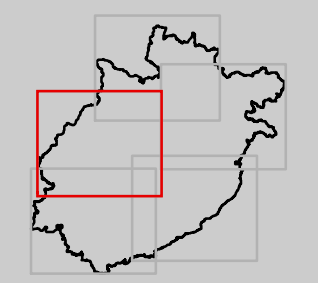
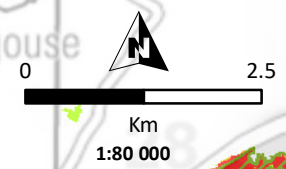
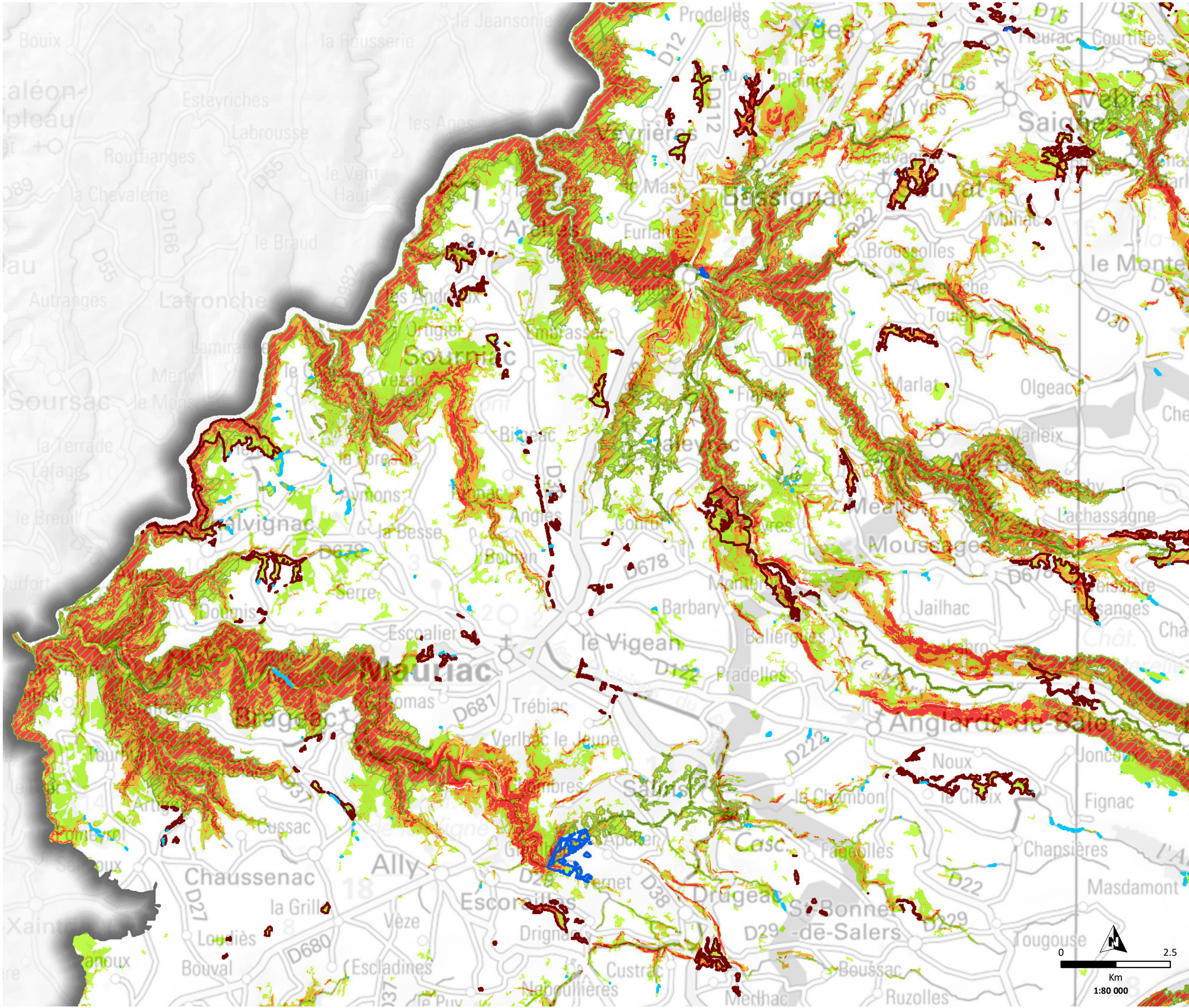
Enjeux forestiers

-  Zones humides
-  Périmètres de protection captage AEP
-  Réserves de chasse et de faune sauvage
-  Réservoirs de biodiversité
-  Pentes supérieures à 50 %
-  Pentes supérieures à 30 %
-  Forêts










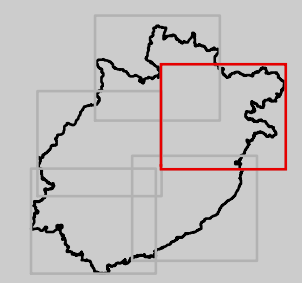
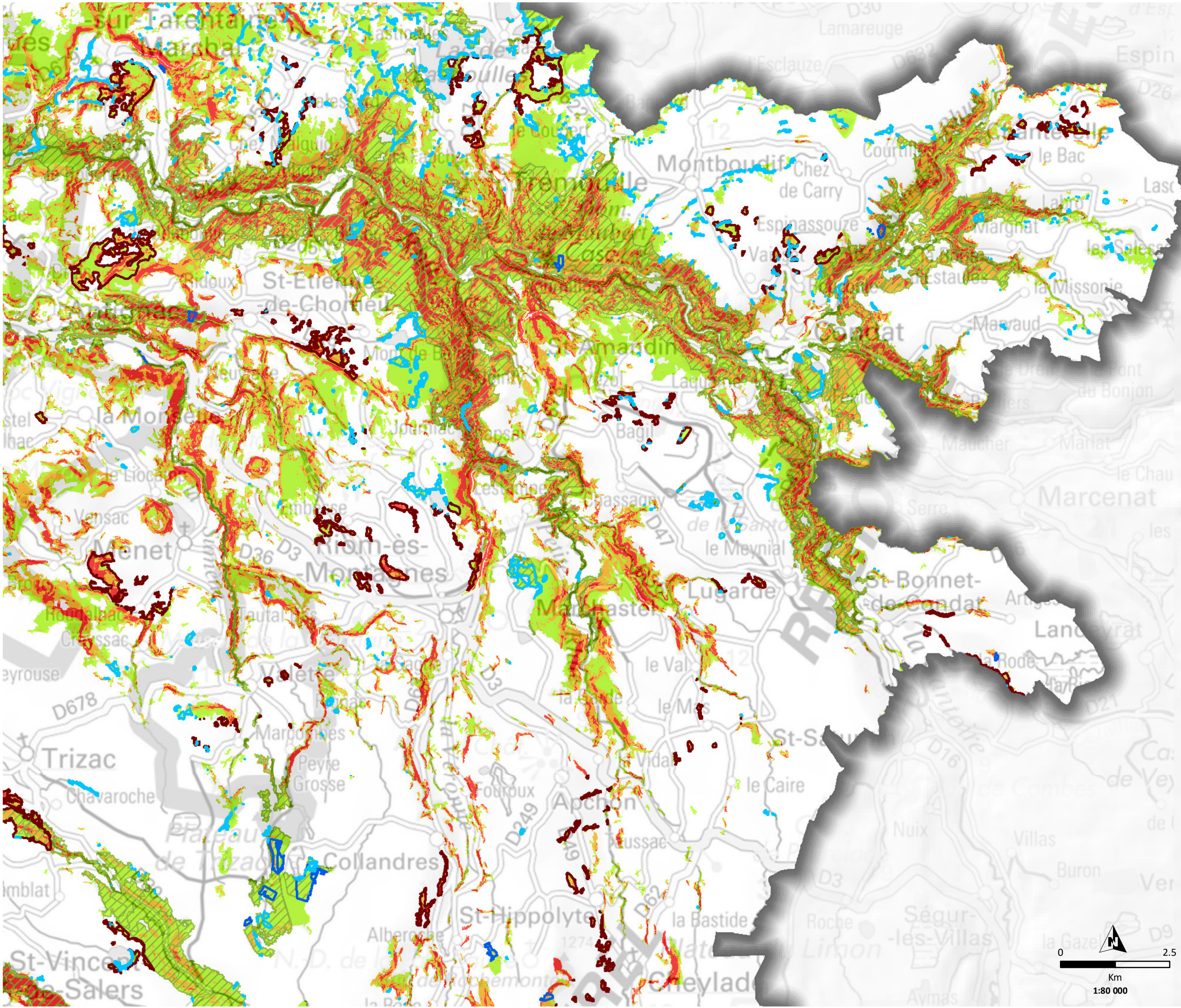
Enjeux forestiers

-  Zones humides
-  Périmètres de protection captage AEP
-  Réserves de chasse et de faune sauvage
-  Réservoirs de biodiversité
-  Pentes supérieures à 50 %
-  Pentes supérieures à 30 %
-  Forêts










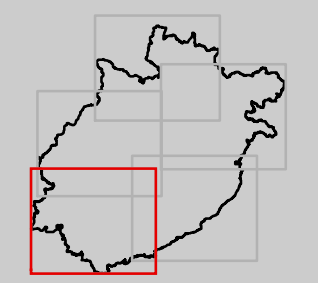
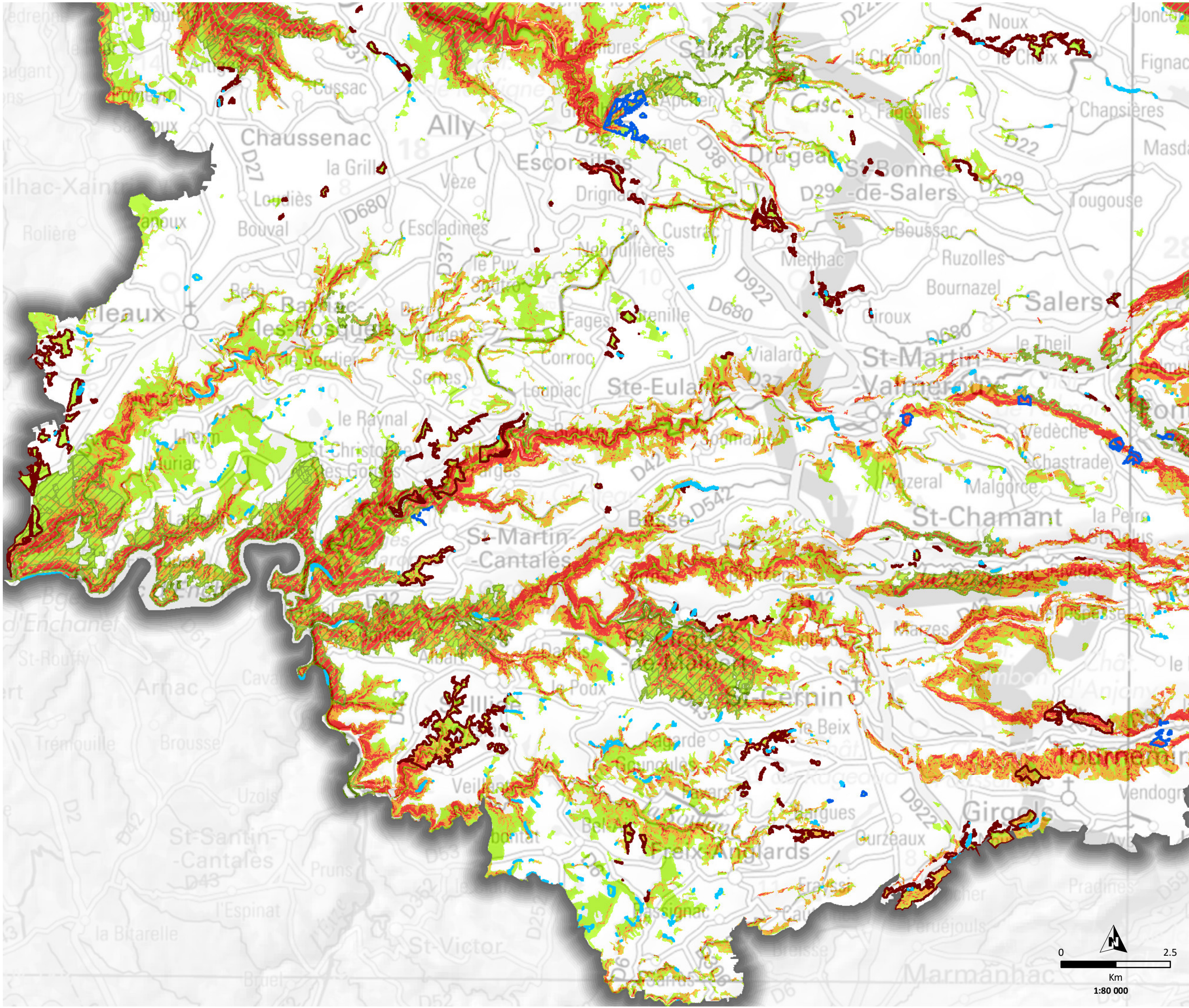
Enjeux forestiers

-  Zones humides
-  Périmètres de protection captage AEP
-  Réserves de chasse et de faune sauvage
-  Réservoirs de biodiversité
-  Pentes supérieures à 50 %
-  Pentes supérieures à 30 %
-  Forêts










Enjeux forestiers

-  Zones humides
-  Périmètres de protection captage AEP
-  Réserves de chasse et de faune sauvage
-  Réservoirs de biodiversité
-  Pentes supérieures à 50 %
-  Pentes supérieures à 30 %
-  Forêts



Enjeux forestiers

-  Zones humides
-  Périmètres de protection captage AEP
-  Réserves de chasse et de faune sauvage
-  Réservoirs de biodiversité
-  Pentés supérieures à 50 %
-  Pentés supérieures à 30 %
-  Forêts

